



Lot 100 Fox Hall  
Colonial Homecrafters, Ltd.



# Colonial Homecrafters, Ltd.

2026

1791 Cambridge Drive \* Suite 102 \* Richmond, Va. 232338  
804.741.6061 office \* 804.741.4984 \* www.chchomes.com

## Lot 100 Fox Hall

**\$ 2,034,950**

Engineered Footings with Soil Analysis  
Approx. 4,857 sq. Ft. Finished Area

### Square footage breakdown:

### Ceiling Height:

### Finish Schedule:

#### Interior Living Spaces

Terrace	976	10'-0"	Finish
First Floor	1,932	10'-0"	Finish
Second Floor	1,949	9'-0"	Finish
Third Floor	862	8'-0"	Unfinished

#### Exterior Living Spaces

Garage	958
Patio	504
Loggia/Deck	504

#### Exterior Living:

- Andersen, 200 Series, Low E, Vinyl Tilt-In Insulated Windows (white)
- Anderson four panel sliding doors
- Front Door, Custom Mahogany Wood Door with Glass Panes
- Brick Veneer, All Sides
- Front Porch with Bluestone Paving and treads
- Black Aggregate
- Asphalt Driveway
- Loggia, TREX decking and Aluminum Rails
- Black Aggregate Concrete Patio Under and Deck with Sidewalk Connecting Drive
- Grad Manor Roof, Colonial Slate
- Sod and Irrigation Front, Rear and Side Yard
- Three Car Garage: Electric Garage Door Openers
- Lot can accommodate a pool

#### Interior Living:

- 4 Bedrooms, 3 Full Baths and 2 Half Baths
- First Floor office and large closet, can be converted into first floor bedroom
- Open floor plan
- Walk out Basement
- Open Front Staircase
- Solid Oak Hardwood Random Width Flooring in Foyer, Dining Room, Library, Family Room, Half Bath, Kitchen, & Upstairs Hallway
- Direct Vent Fireplace with Gas Logs in Family Room
- Bedrooms Carpet and walk in closets
- Laundry Room, Second Floor

**Basement Level:**

- Large Recreation Room, LVT Floor
- Drop Zone with Lockers/Closet and LVT Floor
- Wet Bar: Kraftmaid Painted flat panel doors  
Quartz Countertops, Level 2, Stainless Steel Undermount Sink  
GE Spacemaker Compact Refrigerator GCE06GSHSB
- Bath: Kraftmaid Vanity with Quartz Top, Level 1, Moen Voss Fixture, Toto Toilet
- 3 Car Garage, Oversized

**Kitchen:**

- Custom Kitchen cabinets, Painted, Shaker Flat Panel Cabinets, Dove White with soft close doors and drawers,
- Quartz Countertops, Level 2, with 18 gauge Stainless Steel Undermount Sink, Elkay, Align, Moen, Stainless
- Kitchen Island with Breakfast Bar Overhang
- Walk in Pantry
- Appliance Package: CL4250UFD/S/T SUB ZERO 42" FRENCH DOOR BOTTOM FREEZER  
CG365P/S Wolf 36" Pro Gas Cooktop  
AK9234BS Zephyr 36" Liner Hood  
SO30TE/S/TH Wolf 30" E Series Convection Wall Oven  
MDD30TE/S/TH Wolf 30" E Series Built In Microwave  
G5056SCVISFP Miele Futura Classic Dishwasher front Controls 3rd Rack  
Disposal Insinkerator ½ Horsepower

**Butler's Pantry:**

- Custom Kitchen cabinets, Painted, Shaker Flat Panel Cabinets, Dove White with soft close doors and drawers
- Quartz Countertops, Level 2

**Walk in Pantry:**

- Stained wood countertop
- Open Shelves

**Primary Suite:**

- Carpet
- Crown Moulding

**Primary Bath:**

- Kraftmaid Painted Flat Panel Cabinets Vanity with Quartz Tops, Moen Voss Fixture
- His and Hers Walk in Closet
- Bath, Ceramic Tile, Kraftmaid, Painted, Shaker Flat Panel Cabinets, Dove White Quartz Level 2 Top,
- Voss, Moen, Brushed Nickel, Chrome, Matte Black
- Freestanding tub, Water Closet, Large Tile Shower, Ceramic Floors

**Half Bath, first floor:**

- Vanity with Quartz Top, Moen Voss Fixture, Toto Toilet

**Baths:**

- Moen Voss Bath Fixtures and TOTO toilets
- Bathroom Vanities, painted cabinets with Quartz Countertop, Ceramic Tile Floor
- Tiled Shower with Clear Glass Shower Door
- Tub with Surround and Curved Shower Rod

**Hardware:**

- Schlage Latitude Door Hardware, Brushed Nickel, Chrome, Oil Rub Bronze, Matte Black
- Towel Bars and Toilet Papers in ½ Bath, Full Baths and Primary Bath, Moen to match Bath Fixtures

**Moulding:**

- 1x8, first floor, 1x6 second floor, Base Molding
- 1x4 with 1x6 header and decorative piece casing
- Panel molding and Coffered Ceiling in Dining Room
- Two Member Cornice Molding Foyer, Dining Room, Kitchen, Family Room, Primary Bedroom and Upstairs Hall
- MDF Closet Shelving and Fir Closet Rods
- Doors, Raised 2 Panel, Solid Core

**Energy Standards:**

- Andersen, 200 Series, Low E
- Energy Efficient Insulation Package, Blown Cellulose/Fiberglass in Walls and Ceilings
- Primary Bath, Laundry Room, Half Bath and Pipes Insulated for Quietness
- 2 Zone Dual Fuel Heat and Air Conditioning with Separate Zones Controlled by Thermostats
- Tankless Gas Hot Water Heater

**Technology:**

- Structured Cables Package 8 with Media Center and Input Feeds
- 1-Structured Cable Enclosure 8 Locations of CAT5e or RG6
- 1-CAT6 and 1-RG6 Input Feeds CAT5e Wire and Hardware, 2-Wireless Access Point

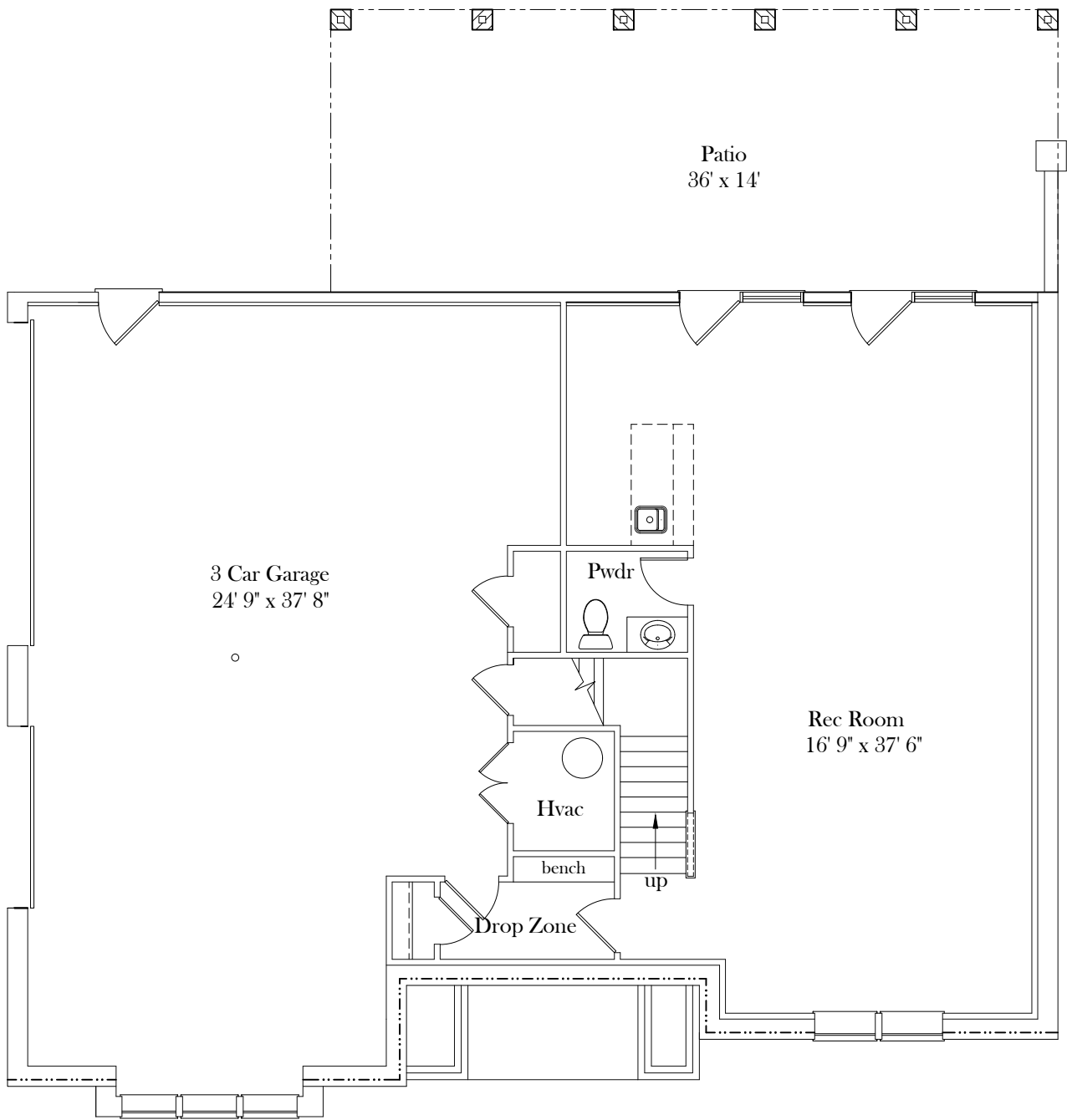
**Third Floor:**

- Unfinished
- Plumbing and electrical roughed in

***All Information Deemed Reliable but Not Guaranteed  
Pricing and Specifications May Change Without Notice***

# Tuckahoe V

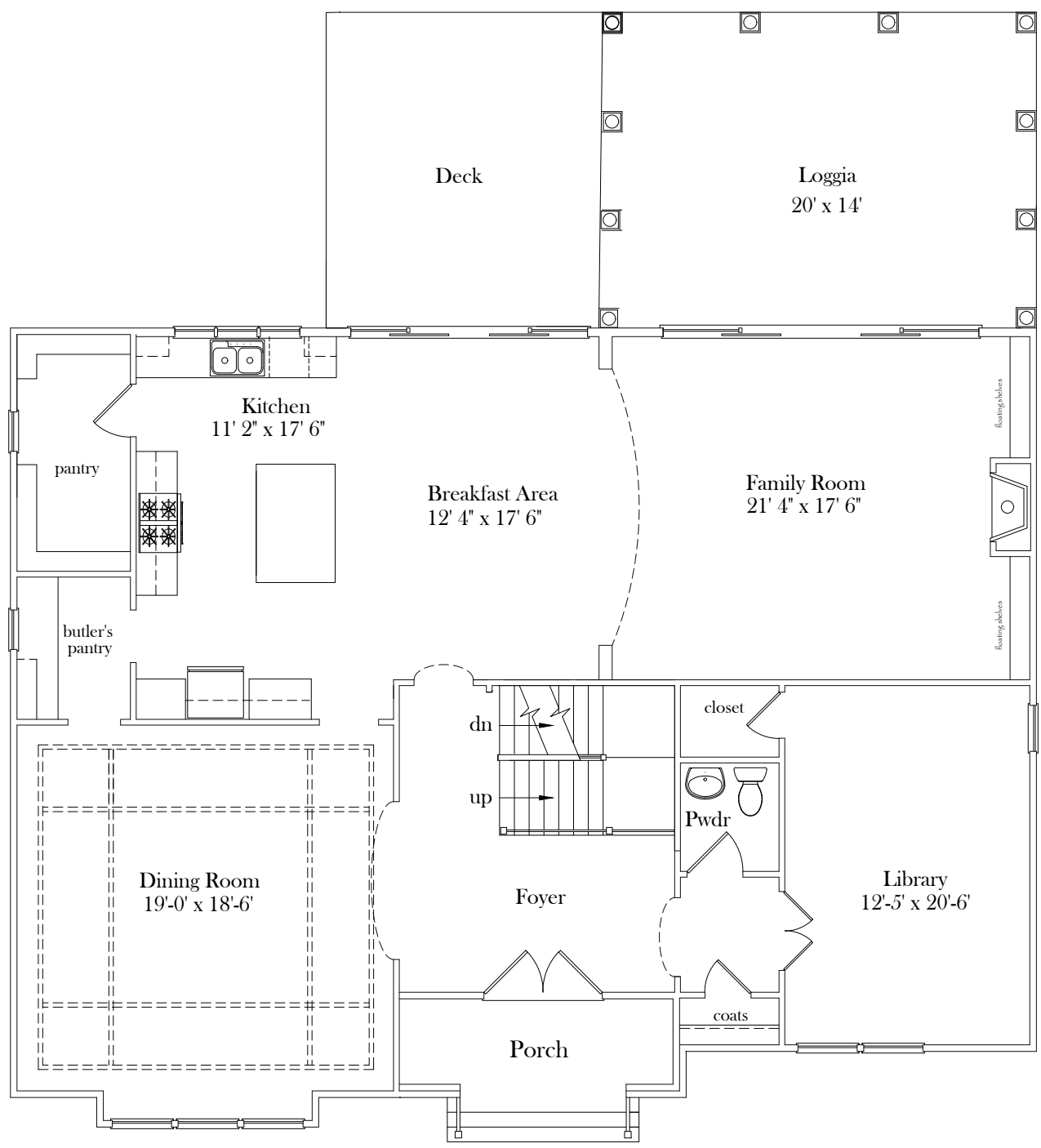
Lot 100 Fox Hall



Basement Plan

# Tuckahoe V

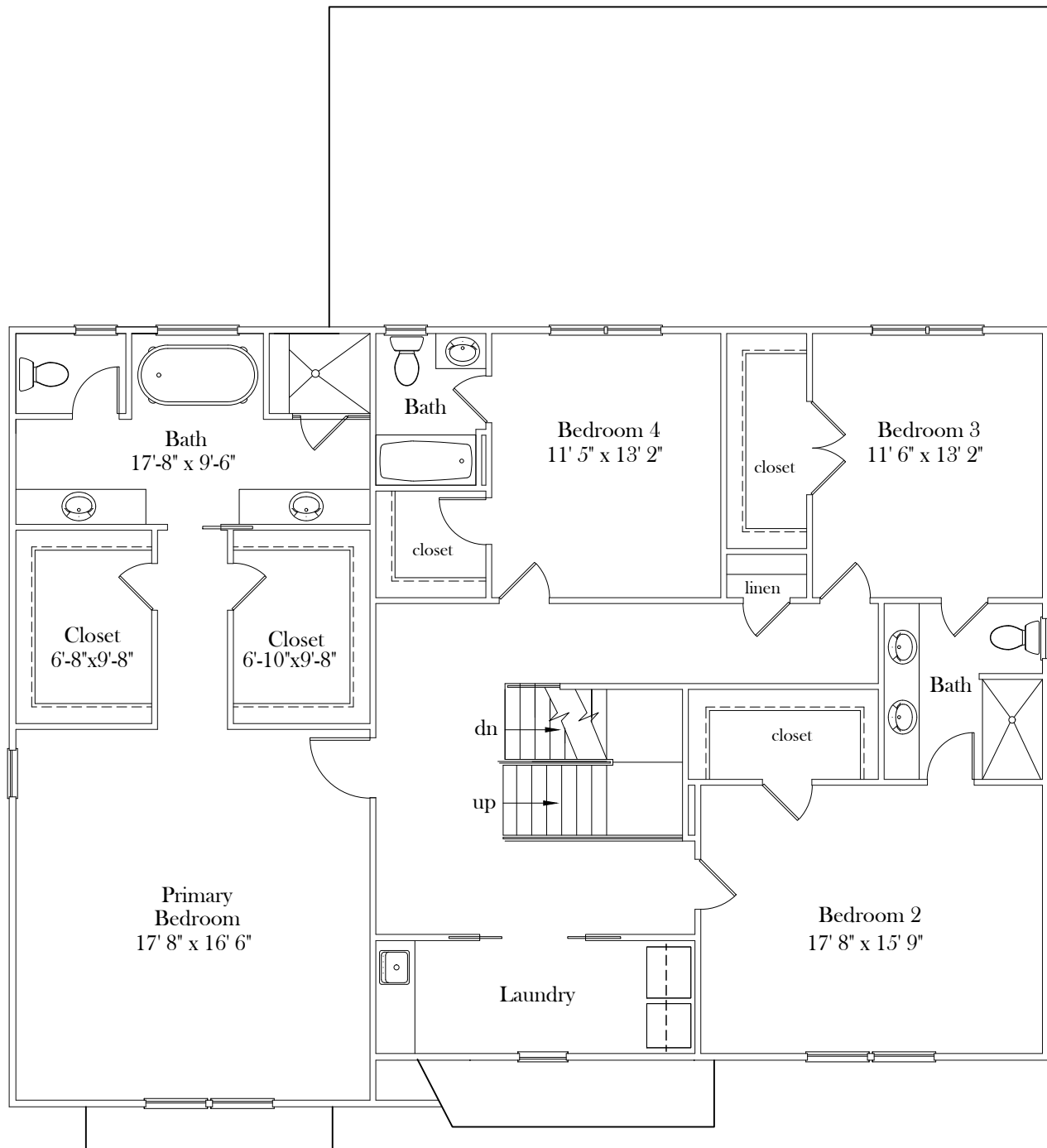
Lot 100 Fox Hall



First Floor Plan

# Tuckahoe V

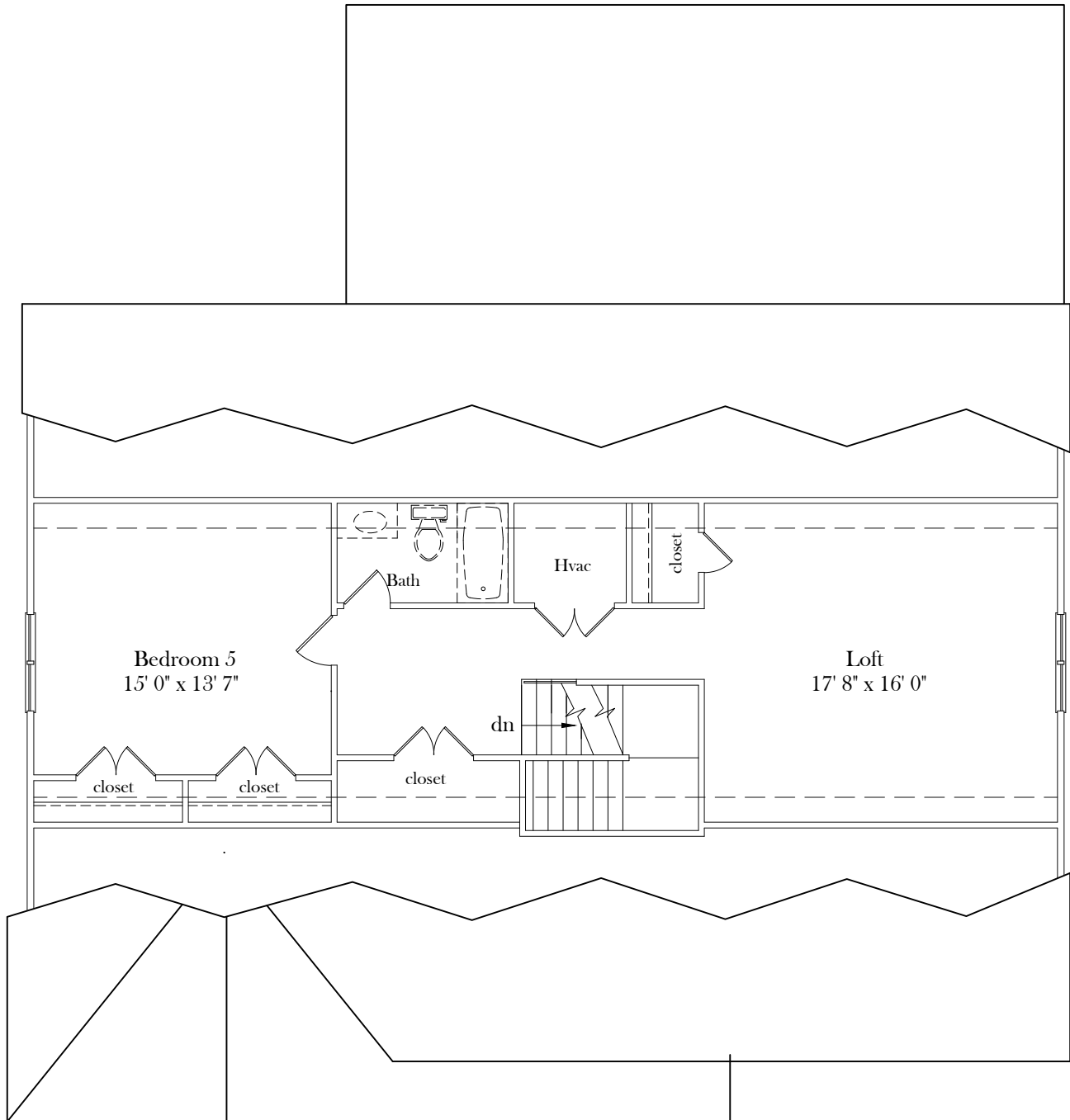
Lot 100 Fox Hall



Second Floor Plan

# Tuckahoe V

Lot 100 Fox Hall



Attic Plan





